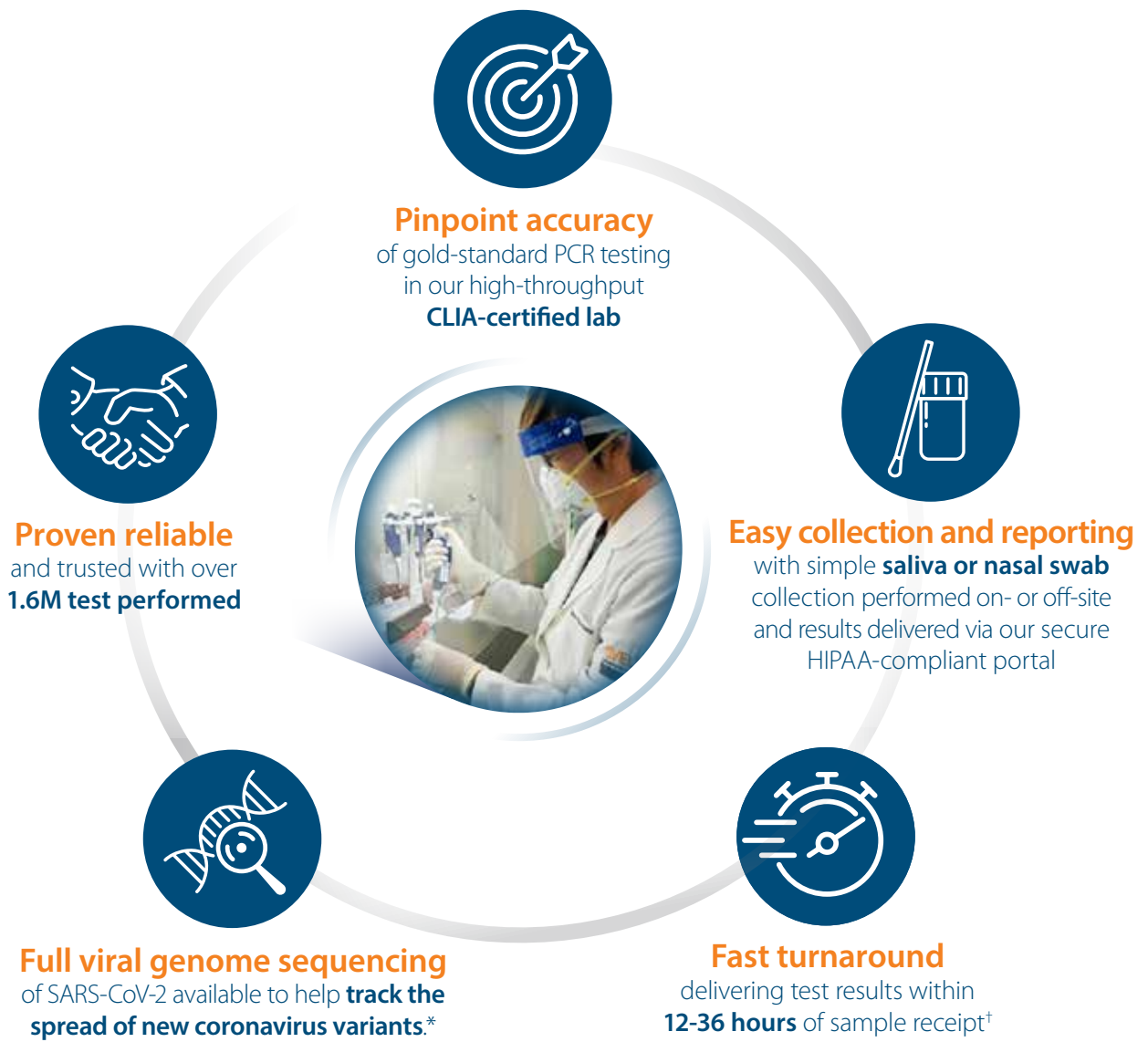


# PROVEN VIRUS DETECTION WHEN IT MATTERS MOST.

## COVID-19 is active and evolving.

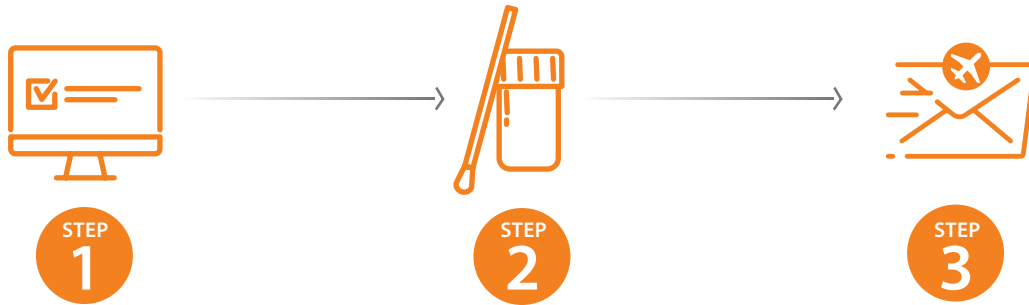
AvellinoCoV2 RT-PCR is designed to detect COVID-19 and AvellinoCoV2 Respiratory panel is designed to detect COVID-19 as well as Influenza A, B, and C to help keep your business, manufacturing, warehouse, and office facilities safe, open, and compliant.



Order your AvellinoCoV2 or AvellinoCoV2 Respiratory test and collection kits today.  
+1 (650) 396-3741 • info@Avellino.com



**Easy to order. Easy to collect. Easy to administrate.**



STEP  
**1**

**ORDER**

Order AvellinoCoV2 RT-PCR tests for delivery and administration

STEP  
**2**

**COLLECT**

Collect sample by swabbing the nasal cavity or collecting saliva sample

STEP  
**3**

**SHIP**

Ship sample to Avellino's high-throughput CLIA-certified lab

**Easy testing management and comprehensive support.**



**PROCESS**

Avellino runs test in our high-throughput CLIA-certified lab

**DELIVER**

Results delivered to ordering clinician and patient via secure-HIPAA compliant portal

**BILL**

Avellino can direct-bill health insurance or the appropriate government agency for sample collection and testing

**WHEN TO USE**

**AvellinoCoV2** RT-PCR TESTS

For detection of **COVID-19**

**RESPIRATORY**  
**AvellinoCoV2**

For detection of **COVID-19 or flu**

\*Full genome sequencing is an additional service from Avellino. For more details contact Avellino.

†Avellino must receive complete patient and test ordering information at time of sample receipt in order to provide test results in 12–36 hours. Patient must provide contact information and consent in order to receive results directly.

**Avellino Lab USA, Inc.**

1505 Adams Drive, Suite B2, Menlo Park, CA 94025  
(650) 396-3741 | [avellino.com/en/products/avellinocov2/](http://avellino.com/en/products/avellinocov2/)

